

Features

Stabilized power supply

By using the power supply, the light output from the fluorescent lamp is constant and uniform even when the input voltage fluctuates.

Protected lamp filaments

Preheating function protects the lamp and ensures maximum lamp life.

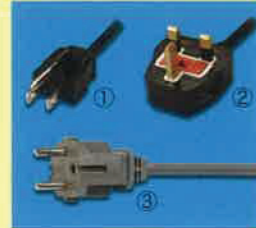
Abnormality detection function

The power supply has a function of stop operating when the output voltage rises in abnormal condition.

AC Power plug

Please add the type of AC power plug to the end of ordering code.

Example) RFL16/400ABX-CEE



① SVT ② BS ③ CEE

Type of AC Power plug :

SVT	3 Pin with adapter for 2 Pin AC120V
BS	British cord AC220V~240V
CEE	German cord AC220V~240V

H.F. Power supply HF-GLC

HF5030GLC / HF8030GLC / HF9230GLC / HF41030GLC

By using the power supply, the light output from the fluorescent lamp is constant and uniform even when the input voltage fluctuates by as much as plus or minus 15 percent, or by a ripple voltage or 50 / 60Hz. Before starting the illuminator, the lamp filament needs preheating for 3 seconds, which protects the lamp and ensures maximum life.



Power supply, light control type HF-GLC

Light control

Continuous light control without flickering : 100%— 60% dimmable.

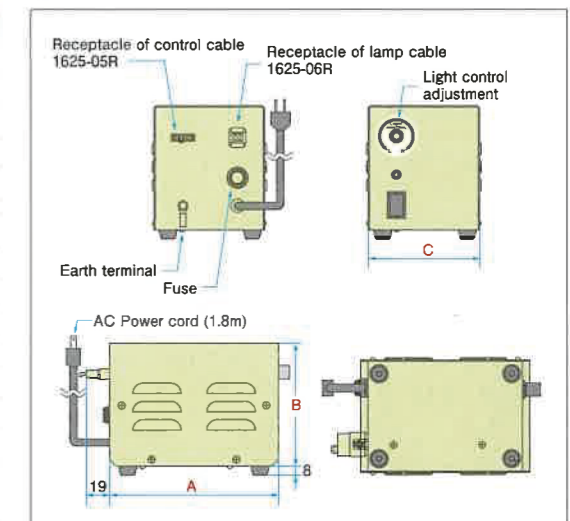
Remote circuit placed inside of the power supply

ON/OFF operation and Light control by external function.

Electrical Specifications

	HF5030GLC	HF8030GLC	HF9230GLC	HF41030GLC
Input voltage	AC100~240V 50/60Hz			
Light control range	100~60%			
Input current (at AC100V)	250mA MAX	300mA MAX	330mA MAX	530mA MAX
Lamp current	120mA	150mA	210mA	230mA
Lamp wattage	4W or 5W	8W	10W	14W MAX
Operation frequency	25KHz	26KHz	22KHz	24KHz
Insulation resistance voltage	① Input-frame : AC1.5KV for 1 min no abnormality ② Input-output : AC1.5KV for 1 min no abnormality			
Insulation resistance	① Input-frame : DC500V more than 100MΩ ② Input-output : DC500V more than 100MΩ			
Over voltage category	II(Supply from the fixed equipment)			
IP Rating	IP20			
Operation temperature range	10°C~40°C			
Operation humidity range	20%~75%RH (non condensing)			
Storage temperature range	-10°C~75°C			
Storage humidity range	20%~75%RH (non condensing)			

Dimension



Applicable lamp

	Ring lamp	Linear lamp
HF5030GLC	50A 50B 50GA 50GB 60A 60B 60GA 60GB	
HF8030GLC	80A 80B 80GA 80GB	FL095 FL135 FL210
HF9230GLC	92A 92B 92GA 92GB	
HF41030GLC	110A 110B 110GA 110GB 127B 127GB	FL287

H.F. Power Supply	A	B	C
HF5030GLC	140	101	92.5
HF8030GLC			
HF9230GLC			
HF41030GLC	185	111	102.5

Power supply Line-UP



HF5030GLC HF9230GLC
HF8030GLC HF41030GLC

Ring lamp : 50~127mm
Linear lamp : 95~287mm



EF4830FLC EF4830FLC-SK
EF4830FLC-AH

Ring lamp : 160~300mm
Linear lamp : 400~1600mm

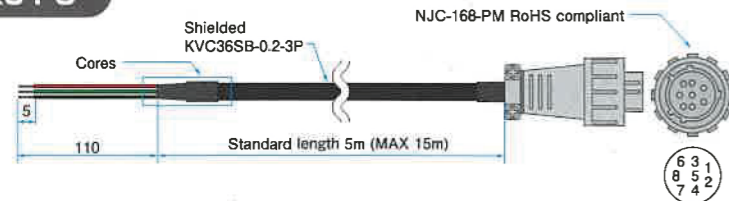


RAY10W-LC

Ring lamp : 80·92·110mm
Linear lamp : 95~287mm

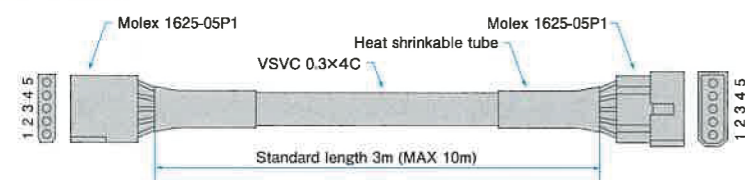
Control cable

MKS-P8



Pin No.	Wire Color	Name
1	Brown	Shield
2	Black	GND
3	Gray	RY
4	Yellow	CT
5	Red	+24V
6	White	E
7	Green	C
8	—	NC

GLC-5P



Pin No.	Wire Color	Name
1	Brown	Shield
2	Black	GND
3	Green	RY
4	White	CT
5	Red	+24V

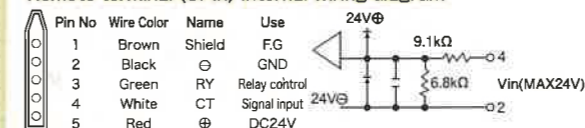
HF-GLC CONTROL cable (GLC-5P) connection -in option-

Remove the short-circuit bar from the Remote terminal (5 pin) on the back panel of Power supply.
Insert " 5 Pin external control cable (3m)" into the Remote terminal.

Switch ON/OFF by external function

Preheating function will start operation after switch ON.
Short the circuit Pin#2 and Pin#3, the lamp will light.
Pin#3 is for + Pin#2 is for - Please make sure the polarity.
Opening voltage: 24V Shorting current: 20mA approx.

Remote terminal (5Pin) internal wiring diagram



Lighting control by external function

- (1) by Volume
Open the circuit Pin#2 and Pin#3 when the power is ON.
Add the volume between Pin#4 and Pin#5 (20kΩ approx)
- (2) by External voltage
Open the circuit between Pin#2 and Pin#3 when the power is ON.
Add DC10.5~24V between Pin#2 (-) and Pin#4 (+), light can be dimmed

EF4830FLC / EF4830FLC-SK / EF4830FLC-AH

Power supply for Ring: 160~300mm / Liner: 400~1600mm

■ Flicker-Free

EF4830FLC Operation frequency 22KHz
 EF4830FLC-AH Operation frequency 22KHz
 EF4830FLC-SK Operation frequency 60KHz

■ Function of the stop operating when the output voltage rises up in abnormal condition

■ Light control by VR or external signal (Light control range 60-100%)

■ External ON / OFF by remote circuit

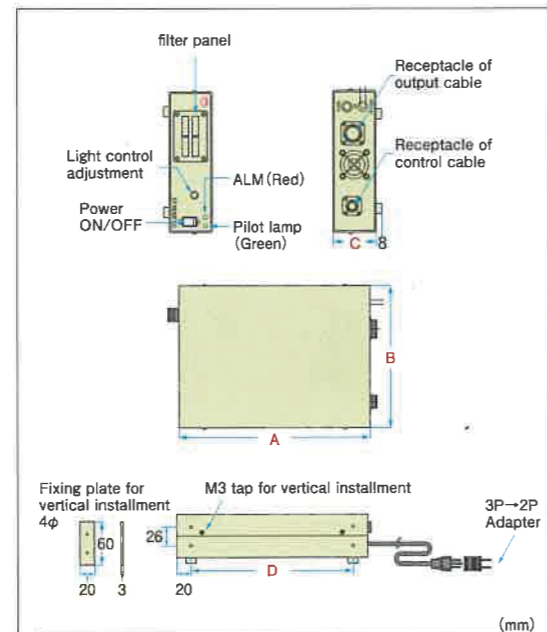
■ Stabilized
 Provide constant and uniform lighting



●Electrical Specifications

	EF4830FLC	EF4830FLC-SK	EF4830FLC-AH
Input voltage	AC100V~240V 50/60Hz		
Input current	1.5A Max (at AC100V) 0.8A Max (at AC240V)	1.8A Max (at AC100V) 1.0A Max (at AC240V)	1.8A Max (at AC100V) 1.0A Max (at AC240V)
Light control range	60~100%		
Operation frequency	22KHz	60KHz	22KHz
Maximum consumption wattage	48W	48W	60W
Insulation withstand voltage	① Input-frame : AC1.5KV for 1 min no abnormality ② Input-output : AC1.5KV for 1 min no abnormality		
Insulation resistance	① Input-frame : DC500V more than 100MΩ ② Input-output : DC500V more than 100MΩ		
EMC standard	based on VCCI class A		
Operation temperature range	5°C~45°C (Non-condensing)	10°C~40°C(Non-condensing)	
Operation humidity range	20%~75% (Non-condensing)		
Storage temperature range	-10°C~75°C (Non-condensing)		
Storage humidity range	20%~75% (Non-condensing)		

●Dimension



H.F. Power Supply	A	B	C	D
EF4830FLC	265	195	60	225
EF4830FLC-SK	290	200	70	250
EF4830FLC-AH	275	205	70	235

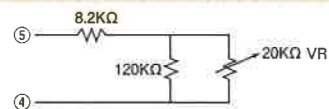
●Applicable lamp

	Ring lamp	Linear lamp
EF4830FLC	160GB-NEX-T14-10W	FL16NEX /400T16
EF4830FLC-SK	200GB-NEX-T14-10W 250GB-NEX-T14-10W 300GB-NEX-T14-10W	FL25NEX /600T16 FL32NEX /800T16 FL41NEX /1000T16 FL48NEX /1200T16
EF4830FLC-AH	—	FL55NEX /1400T16 FL56NEX /1500T16 FL60NEX /1600T16

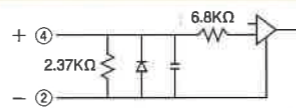
※ Standard lamp color is "NEX"(Triple color phosphor, Daylight White).Other color are also selective.

EF4830FLC CONTROL cable (MKS-P8) connection -in option-

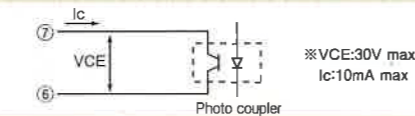
- When the external control cable is not in use, the light intensity can be controlled by the adjuster on the front panel.
- ON / OFF by external function
 Insert the external control cable into the connector.
 By connecting Pin#2 and Pin#3, the filament Pre-heating will start automatically.
 By opening Pin#2 and Pin#3, the lamp will light.
 • Open-circuit voltage: DC-7V Pin #3 +
 • Short-circuit lamp current: DC-7mA Pin #2 -
 • Pin #4 is opened
- Light control by external volume
 Connect Pin#2 to Pin#3.
 Place the volume and resistance in series between Pin#4 and Pin#5.



- Light control by external voltage
 Connect Pin#2 to Pin#3.
 Add DC2V~DC5V between Pin#2 and Pin#4.



- Error detection
 LED indicates that an error condition has been detected.
 Pin#6 and Pin#7 are connected.



※ Specifications of EF4830FLC-SK and EF4830FLC-AH are different. For further details please contact us.

Low-cost Power supply RAY10W-LC

Raytronics launches new model RAY10W-LC. It is designed for our Ring lamp 80,92 and 110mmφ. It offers uniform lighting even if an input voltage from AC line fluctuates.

- Provides good performance at low cost.
- Designed for both stereomicroscope and simple image processing.
- Accepts wide range of input voltage:
 AC80V~AC240V 50 / 60Hz
 Operation frequency: 33kHz.
- Applicable lamp: Raytro ring fluorescent lamp 80, 92 and 110mmφ
- Light control range: 60~100%



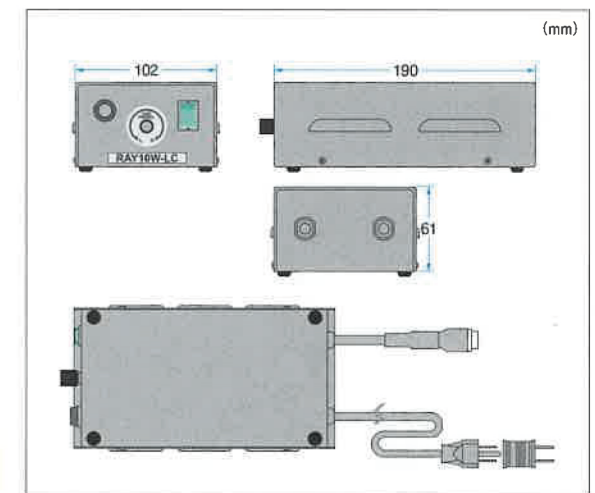
●Electrical Specifications

	AC100V~240V 50/60Hz
Input voltage	AC100V~240V 50/60Hz
Consumption wattage	AC80V: 250mA Typ (using 110B Lamp) AC240V: 85mA, Typ (using 110B Lamp)
Lamp current	200mA (Line regulation by internal adjuster ±10%)
Operation temperature range	5°C~45°C (Non-condensing)
Operation humidity range	30%~90% (Non-condensing)
Storage temperature range	-10°C~85°C (Non-condensing)
Storage humidity range	30%~90% (Non-condensing)
Insulation withstand voltage	Primary-Secondary, Primary-FG: more than 50MΩ at DC500V Megger
Insulation resistance	Primary-Secondary, Primary-FG: AC 1.5kV no abnormalities for 1 minute

●Ordering Code

ordering code	Ring fluorescent lamp	Lamphousing	H.F. Power supply
80B-RAY-LC	80B-NEX	LH80B	RAY10W-LC
92B-RAY-LC	92B-NEX	LH92B	RAY10W-LC
110B-RAY-LC	110B-NEX	LH110B	RAY10W-LC

●Dimension



Cable length -1.2m
 ※ For the stereomicroscopy application, please specify your stereomicroscope brand and model to find the appropriate lamp illuminator mount.

Power Supply for Stereomicroscope, DSK8092-GT

- The high frequency inverter DSK8092-GT drives a fluorescent lamp at 23kHz without flickering.
- Can be used at 50Hz / 60Hz both.
- Provides 1500 hours of lamp life.
- Applicable Lamp size: Ring lamp both 80 and 92mmφ.
- The VCCI-compliant power supply is also available.
- Power supply DSK8092-GT(AC100V~240V)

●Dimension

